

Sonnenenergie

mit PROFIL



Product range

as at: 04/2020

Product range

Who we are

Expert for solar mounting systems

With our aluminium and steel profile systems, we focus our activities on the renewable energy market. We develop and distribute modern mounting solutions for photovoltaic systems worldwide.

Your reliable partner

We supply you reliably with high-quality products at constantly favourable conditions. Our highest goal is the satisfaction of our customers.

Networker

We support you holistically in cooperation with our partners from the field of technical planning offices, installation companies and experts, both in the planning and implementation of your project in the field of photovoltaics.



Product range

Terms of delivery

Small parts and pallet goods

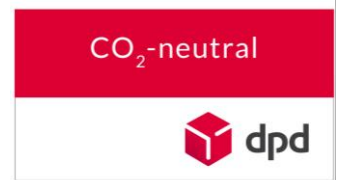
We deliver small parts and pallet goods already from 500 EUR value of goods within Germany without shipping costs free of charge (island surcharges reserved)

Long goods

For deliveries of long goods, freight charges are incurred depending on weight, loading volume and distance from our warehouse and logistics partner in Wuppertal. Please note that you as a customer are responsible for unloading long goods from the truck. Please prepare your warehouse or construction site accordingly. Should a delivery of long goods not be possible due to the absence of the recipient, we reserve the right to charge for a further delivery. Especially for deliveries to construction sites, we ask you to provide a telephone number of a contact person on site for notification of the shipment.

Climate neutral shipping

We work as far as possible with freight forwarders and parcel logistics companies that make a contribution to climate protection and try to compensate for the greenhouse gas emissions generated throughout the entire transport chain.



Product range

Inhaltsübersicht

Fastenings for tiled roofs

Roof hooks and accessories

Fastenings for sheet metal and eternit roofs

Direct mounting system for trapezoidal sheet metal
Hanger bolts and accessories
Solar fasteners
Fasteners for metal seam roofs

Profisystem

Aluminium mounting rails
Profile connectors
Accessories

Module installation

Pre-assembled module clamps
Module clamps and accessories
Module clamps for glass modules

Mounting systems for flat roofs

aerodynamic flat roof systems simplex and duplex
Standard elevations

Mounting systems for groundmounted PV

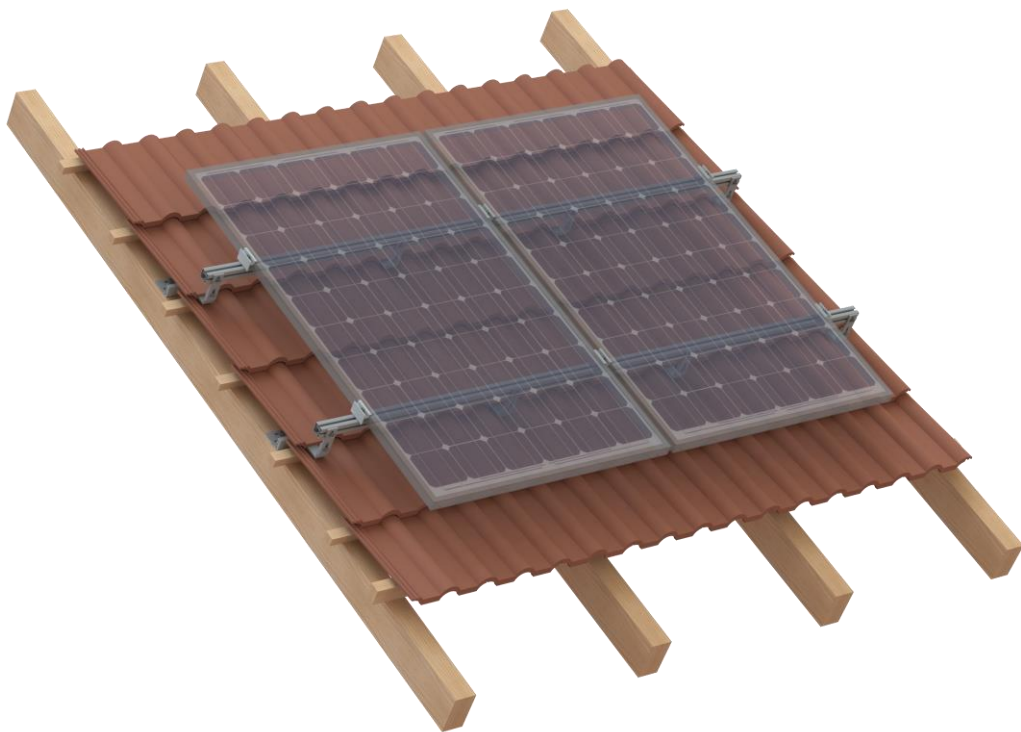
Systems with driven posts and for concrete foundations
duplex field

Fasteners & accessories

screws, nuts, washers in stainless steel

Product range

Fastenings for tiled roofs



Product range

Fastenings for tiled roofs



Roof hook Standard item number: 201.9521-2-.....

For pan tiled roofs

Dimensions **Version A „simple loads“:**
plate 150x60x4, hook 30x5, height 130mm

Version B „middle loads“:
plate 180x80x4, hook 35x6, height 139mm

Version C „heavy loads“:
plate 180x80x5, hook 35x8mm, height 137mm

Notes Available in stainless steel 1.4301, 1.4016 and mixed plate 1.4016, hook 1.4301

The roof hooks are screwed to the roof beam with 2 or 3 8 mm pan head screws or 8 mm wood screws and the mounting rails are connected with an M10 hex-head screw or M10 hammer head screw and an M10 flange nut with serration.



Roof hook adjustable item number : 201.9525-2-140x56K

For pan tiled roofs

Dimensions plate 144x56x5mm, hook 30x5 und 30x6mm

Notes Available in stainless steel 1.4301, 1.4016 and mixed plate 1.4016, hook 1.4301

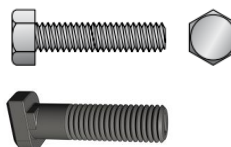
The roof hooks are screwed to the roof beam with 2 or 3 8 mm pan head screws or 8 mm wood screws and the mounting rails are connected with an M10 hex-head screw or M10 hammer head screw and an M10 flange nut with serration.



Pan-head screw or wood screw



Hex-head or hammer-head screw



Hex nut with flange

Product range

Fastenings for tiled roofs



Roof hook beaver tail item number: 201.9521-Biber30x5A2

Dimensions hook 30 x 5 mm
total length 265 mm, height 120 mm

Notes Stainless steel

The roof hooks are screwed to the roof beam with 2 8 mm pan head screws or 8 mm wood screws and the mounting rails are connected with an M10 hex-head screw or M10 hammer head screw and an M10 flange nut with serration.



Roof hook slate item number: 301.9521-Sch30x5A2

Dimensions hook 30 x 5 mm
total length 250 mm, height 70 mm

Notes Stainless steel
Countersunk holes for 6mm countersunk wood screws

The roof hooks are screwed to the roof beam with 3x 6 mm countersunk screws.

The mounting rails are connected with an M10 hex-head screw or M10 hammer head screw and an M10 flange nut with serration.



countersunk wood screw



Roof hook shingle item number: 301.9521-Schindel30x5A2

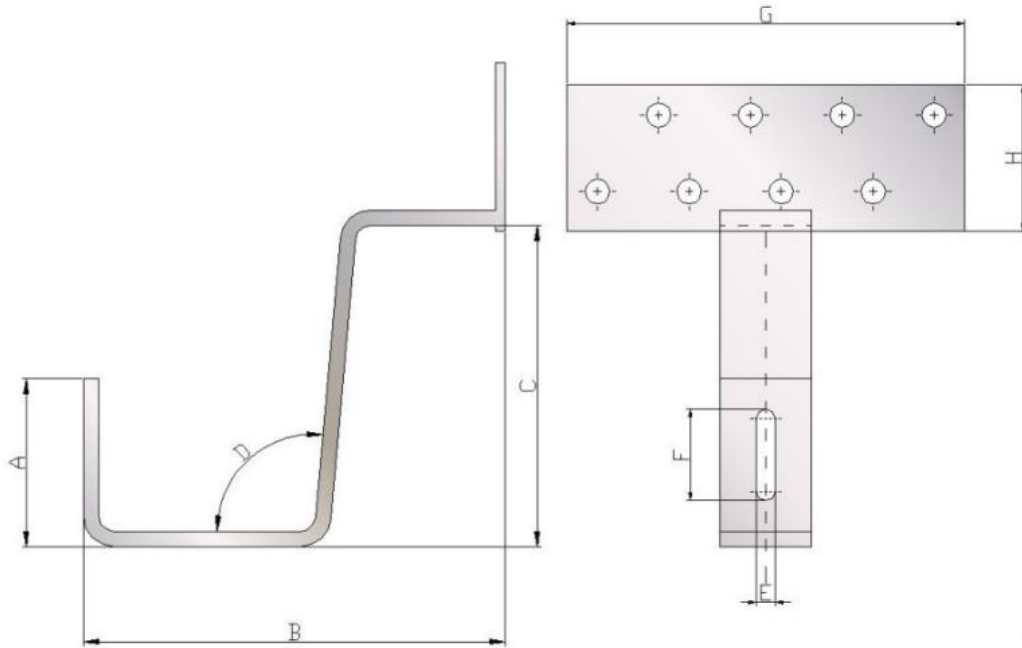
Dimensions hook 30 x 5 mm
total length 135mm, height 70mm

Notes Stainless steel

The roof hooks are screwed to the roof beam with 2 8 mm pan head screws or 8 mm wood screws and the mounting rails are connected with an M10 hex-head screw or M10 hammer head screw and an M10 flange nut with serration.

Product range

Dimensions sheet for pan tiled hooks



lease let us know your required special dimensions:

A	B	C	D	E	F	G	H

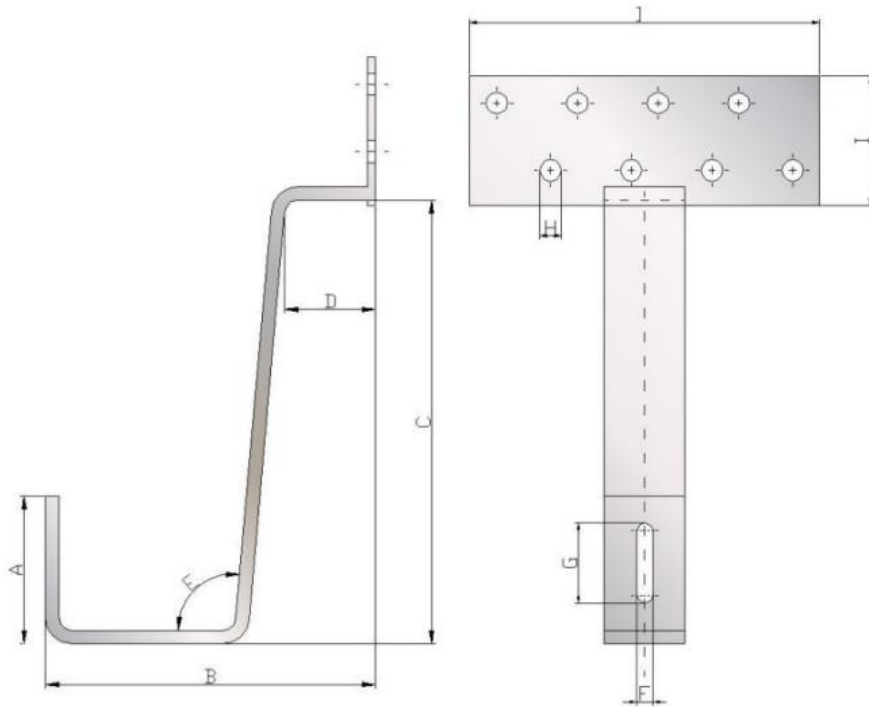
Required quantity:

Shipping address:

For the production we use stainless steel 1.4301, 5 mm thickness, unless otherwise requested

Product range

Dimensions sheet for beaver tail hooks



lease let us know your required special dimensions:

A	B	C	D	E	F	G	H	I	J

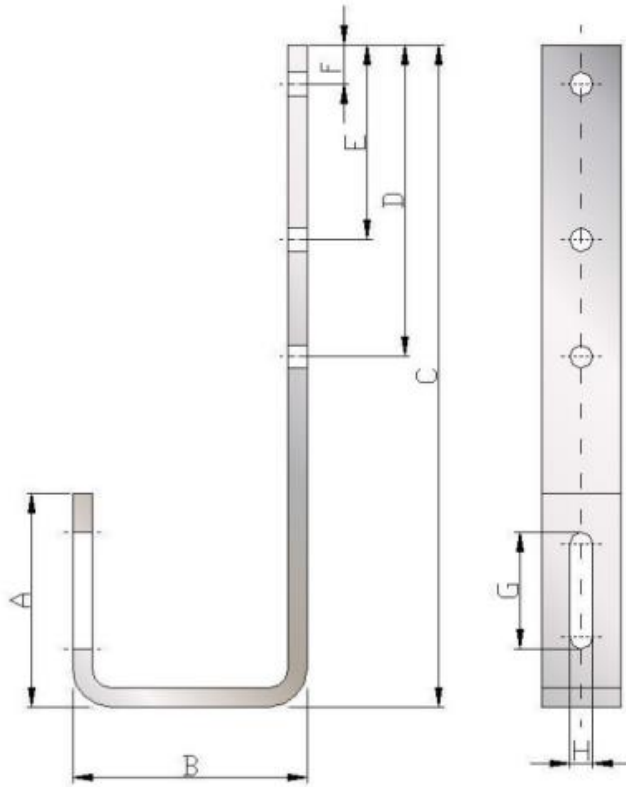
Required quantity:

Shipping adress:

For the production we use stainless steel 1.4301, 5 mm thickness, unless otherwise requested

Product range

Dimensions sheet for slate hooks



lease let us know your required special dimensions:

A	B	C	D	E	F	G	H

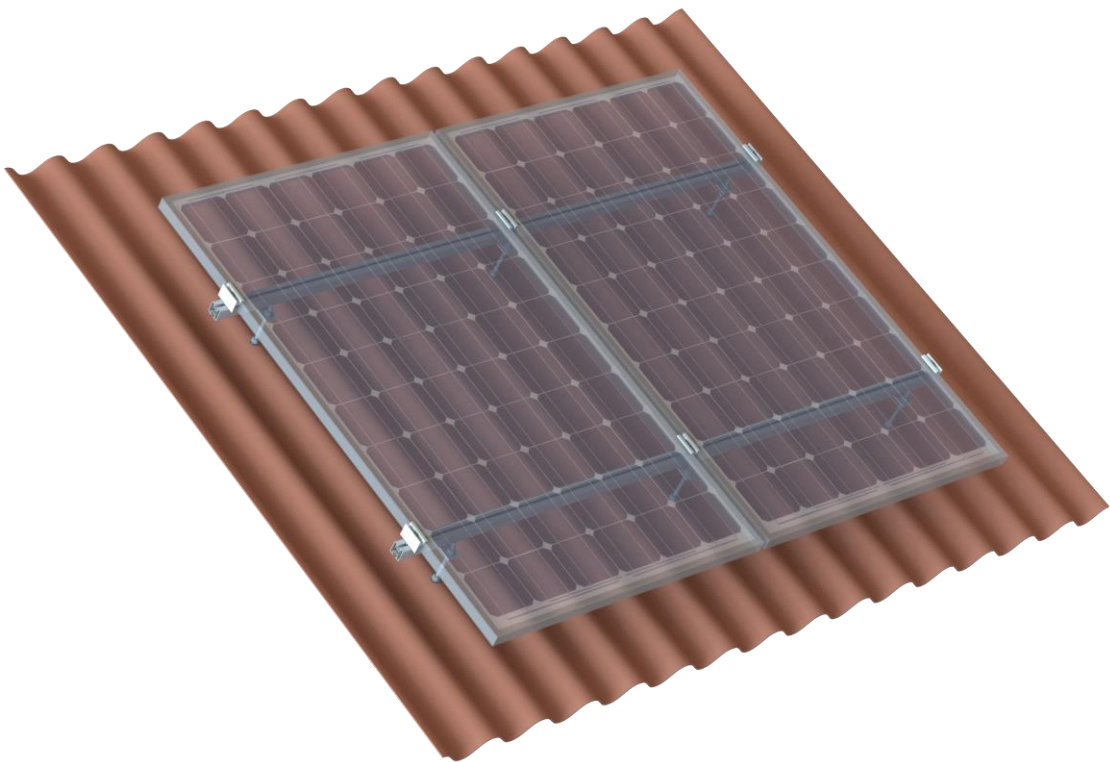
Required quantity:

Shipping adress:

For the production we use stainless steel 1.4301, 5 mm thickness, unless otherwise requested

Product range

Fastenings for sheet metal and eternit roofs



Product range

Fastenings for sheet metal and eternit roofs

Trapezoidal rail flat item number: 201.031.400-BK



Dimensions

height: 1,3 cm, length: 400 mm

Notes

Continuously covered on the back with EPDM tape, for direct screw connection to the trapezoidal sheet metal

For mounting modules with alignment = upright

With horizontal module position, the modules must be clamped at the short sides.

Trapezoidal rail high item number: 201.131.400-BK



Dimensions

height: 6 cm, length: 400 mm

Notes

Continuously covered on the back with EPDM tape, for direct screw connection to the trapezoidal sheet metal

For mounting modules with alignment = upright

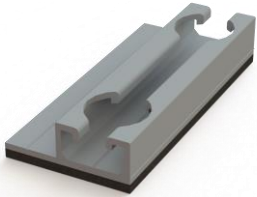
With horizontal module position, the modules must be clamped at the short sides.



Product range

Fastenings for sheet metal and eternit roofs

Trapezoidal rail horizontal item number: 201.231.120-BK



Dimensions height: 1,3 cm, length: 120 mm

Notes Continuously covered on the back with EPDM tape, for direct screw connection to the trapezoidal sheet metal

For mounting modules with alignment = horizontal

Kurzschiene Standard Artikelnummer: 201.731.150-B



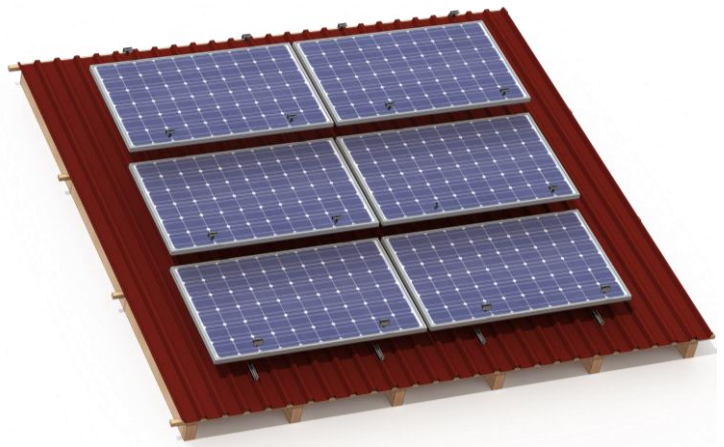
Dimensions length: 150 mm

Notes Backed with EPDM tape
2-bores for direct screw connection to the trapezoidal sheet metal

For mounting modules with alignment = horizontal



They are fastened to the trapezoidal sheets by means of construction-approved facade construction screws with drill point or thin sheet screws. See also page 43



Product range

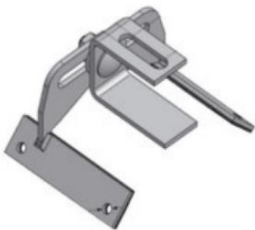
Fastenings for sheet metal and eternit roofs



Roof seam clamp item number: 201.9583-Falzklemmme

Dimensions Up to max. 3.5 mm fold width

Notes Stainless steel roof fold clamp with hole for rail connection M10, assembled with screw, nut, washer



Trapezoidal sheeting panel block item number: 201.9581-.....

Dimensions Individually adjustable for most trapezoidal sheet metal shapes

Notes 4 bores for direct screw connection to the trapezoidal sheet metal

With EPDM pads glued inside

Product range

Fastenings for sheet metal and eternit roofs

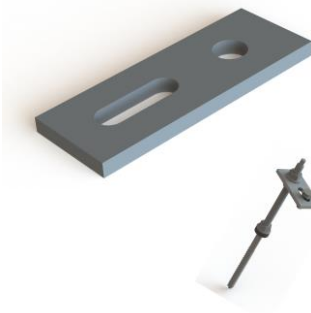


Hanger bolt for timber item number: 301.9216-.....

Dimensions Available from 10x180 to 12x400

Notes Pre-assembled with 3 x M10 flange nut and 1 x EPDM seal

Also available with building authority approval



Adaptor plate item number: 201.302.82.40.6-B

Dimensions 82x40x6 mm, Aluminium

Notes Available for hanger bolts M10 and M12

Product range

Fastenings for sheet metal and eternit roofs



Solar fastener for timber item number: 301.9221-2-.....

Dimensions Various dimensions

Notes Hanger bolt for timber, with special coating, assembled with nuts, washers and mushroom gasket, technical approval



Solar fastener for timber item number : 301.9221-2-.....

Dimensions Various dimensions

Notes Hanger bolt for timber, with special coating, assembled with nuts, washers and calotte, technical approval



Solarbefestiger für Stahl-UK Artikelnummer: 301.9222-2-.....

Dimensions Various dimensions

Notes Hanger bolt for steel, with special coating, assembled with nuts, washers and mushroom gasket, technical approval



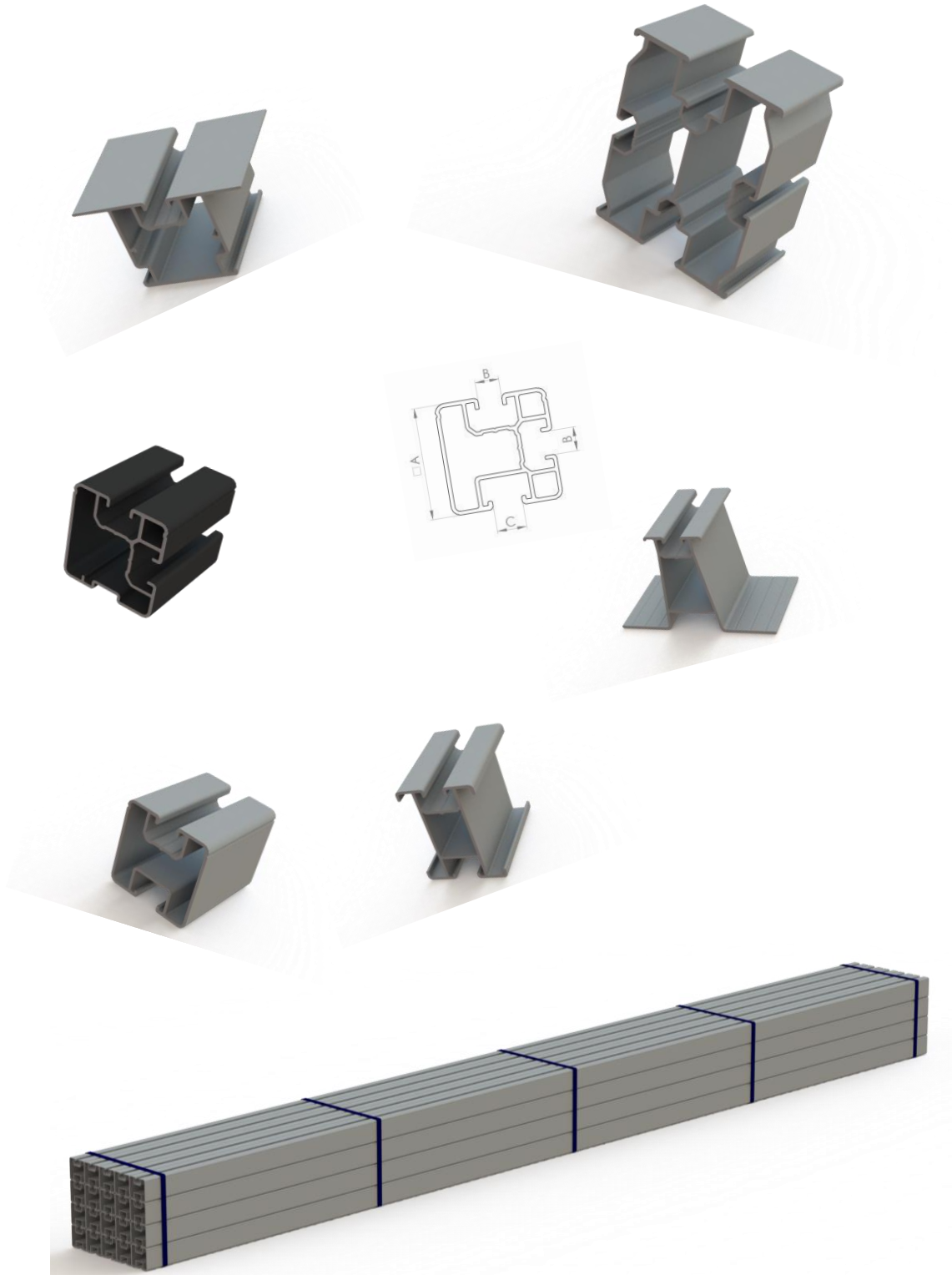
Solarbefestiger für Stahl-UK Artikelnummer: 301.9221-2-.....

Dimensions Various dimensions

Notes Hanger bolt for steel, with special coating, assembled with nuts, washers and calotte, technical approval

Product range

Profile system



Product range

Profile system



Mounting rail PR1 item number: 101.001.6200-B

Dimensions 40 x 40 mm
span: up to 2,65 m*

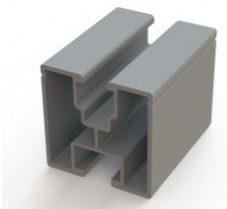
Notes Connection top: slot nut M8 or KlickFix
Connection below: DIN 933 M10 or Profinal hammer head screw



Mounting rail PR1UL item number: 101.201.6200-B

Dimensions 40 x 40 mm
span: bis zu 2,45 m*

Notes Connection top: slot nut M8 or KlickFix
Connection below: DIN 933 M10 or Profinal hammer head screw



Mounting rail PR3 item number: 101.003.6200-B

Dimensions 40 x 40 mm
span: up to 2,65 m*

Notes Connection top: square nut M8 or KlickFix
Connection below: DIN 933 M10 or Profinal hammer head screw



Mounting rail PR3UL item number: 101.203.6200-B

Dimensions 40 x 40 mm
span: up to 2,45 m*

Notes Connection top: square nut M8 or KlickFix
Connection below: DIN 933 M10 or Profinal hammer head screw

* Load assumptions: Snow load zone 1, terrain height up to 285 m, module load: 0.22 kN/m²; wind load zone 1, terrain category 4 - level terrain, roof pitch 45°.

Product range

Profile system



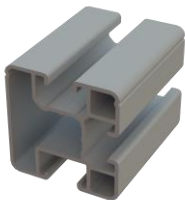
Mounting rail PR15 item number: 101.015.6200-B

Dimensions	40 x 40 mm span: up to 2,60 m*
Notes	Connection top/lateral: slot nut M8 or KlickFix



Mounting rail PR15UL item number: 101.215.6200-B

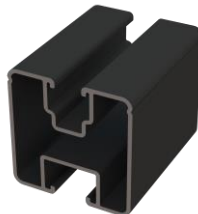
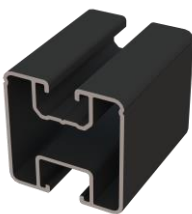
Dimensions	40 x 40 mm span: up to 2,40 m*
Notes	Connection top/lateral: slot nut M8 or KlickFix



Mounting rail PR15M10 item number: 101.415.6200-B

Dimensions	40 x 40 mm span: up to 2,40 m*
Notes	Connection top/lateral: slot nut M8 or KlickFix Connection below: DIN 933 M10 or Profinal hammer head screw

Load assumptions: Snow load zone 1, terrain height up to 285 m, module load: 0.22 kN/m²; wind load zone 1, terrain category 4 - level terrain, roof pitch 45°.



All our mounting rails are also available in anodised E6/EV1 or black anodised and are individually available in different lengths for orders > 1 ton.

Product range

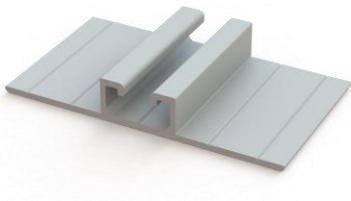
Profile system



Mounting rail PR HB item number: 101.301.6200-B

Dimensions 20 x 40 mm

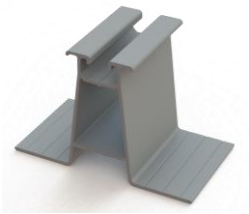
Notes Connection top: slot nut M8 or KlickFix
 Connection below: DIN 933 M10 or Profinal hammer head screw



Mounting rail trapezoidal flat item number: 101.031.6200-B

Dimensions 90 x 20 mm

Notes Connection top: slot nut M8 or KlickFix
 For direct screw connection to trapezoidal sheet metal



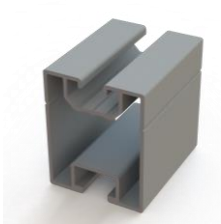
Mounting rail trapezoidal high item number: 101.131.6200-B

Dimensions 90 x 60 mm

Notes Connection top: slot nut M8 or KlickFix
 For direct screw connection to trapezoidal sheet metal

Product range

Profile system



Mounting rails PR5 item number: 101.005.6200-B

Dimensions 50 x 40 mm
Span: up to 3,15 m*

Notes Connection top: slot nut M8 or KlickFix
Connection below: DIN 933 M10 or Profinal hammer head screw



Mounting rail Light1 item number: 101.101.6200-B

Dimensions 50 x 39 mm
Span: up to 2,40 m*

Notes Connection top: slot nut M8 or KlickFix
Connection below: DIN 933 M10 or Profinal hammer head screw



Mounting rail Light3 item number: 101.103.6200-B

Dimensions 50 x 39 mm
Span: up to 2,40 m*

Notes Connection top: square nut M8 or KlickFix
Connection below: DIN 933 M10 or Profinal hammer head screw



Mounting rail PR2 item number: 101.002.6200-B

Dimensions 80 x 40 mm
span: up to 3,765 m*

Notes Connection top: slot nut M8 or KlickFix
Connection below: DIN 933 M10 or Profinal hammer head screw



Mounting rail PR16 item number 101.016.6200-B

Dimensions 80 x 40 mm
Span: up to 3,75 m*

Notes Connection top/lateral: slot nut M8 or KlickFix

Product range

Profile system



Mounting rail border item number: 101.242.6200-B

Dimensions 80 x 40 mm

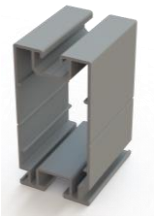
Notes Connection top: slot nut M8 or KlickFix
Connection below: DIN 933 M10 or Profinal hammer head screw



Mounting rail middle item number: 101.243.6200-B

Dimensions 80 x 40 mm

Notes Connection top: slot nut M8 or KlickFix
Connection below: DIN 933 M10 or Profinal hammer head screw



Mounting rail PR17 item number: 101.017.6200-B

Dimensions 80 x 40 mm

Notes Connection top: slot nut M8 or KlickFix
Connection below: DIN 933 M10 or Profinal hammer head screw



Mounting rail PRX80 item number: 101.040.6200-B

Dimensions 80 x 40 mm

Notes Connection top: slot nut M8 or KlickFix
Connection below: DIN 933 M10 or Profinal hammer head screw

Product range

Profile system



Mounting rail PR85/50 item number: 101.255.6200-B

Dimensions 85 x 50 mm

Notes Connection top: slot nut M8 or KlickFix
Connection below: DIN 933 M10 or Profinal hammer head screw



Mounting rail PR200 item number: 101.050.6200-B

Dimensions 108 x 80 mm

Notes Connection top/below: M20 or mounting plates
Connection lateral: slot nur M8 or KlickFix

Product range

Profile system



Angle profile 40x40x3 item number: 100.001.40x40x3-B

Dimensions 40 x 40 x 3

Notes Measurement example

We supply your angle profiles in individual dimensions and lengths, e.g. for waste optimisation



Z-Profile 40x40x40x3 item number: 100.006.40x40x40x3-B

Dimensions 40 x 40 x 40 x 3

Notes Measurement example

We supply your Z-profiles in individual dimensions and lengths, e.g. for waste optimisation



Square tube profile 40x40x3 item number: 100.002.40x40x3-B

Dimensions 40 x 40 x 3

Notes Measurement example

We supply your square tube profiles in individual dimensions and lengths, e.g. for waste optimisation



Tube 40x2 item number: 100.003.40x2-B

Dimensions 40 x 2

Notes Measurement example

We supply your tube profiles in individual dimensions and lengths, e.g. for waste optimisation

Product range

Profile system



U-connector item number: 201.012.200-B

Dimensions length: 200 mm

Notes For mounting rails 40/40
for external mounting 4 drilling screws required for mounting



Insert-Connector item number: 201.218.200-B

Dimensions length: 200 mm

Notes For mounting rails 40/40 for internal mounting
2 connectors per connection point needed



Insert-connector item number: 201.118.200-B

Dimensions length: 200 mm

Notes For mounting rails 50/40 for internal mounting
2 connectors per connection point needed



Insert-connector item number: 201.318.150-B

Dimensions length: 150 mm

Notes For mounting rails 20/40 for internal mounting
1 connector per connection point needed

Product range

Profile system



Insert-connector item number: 201.418.200-B

Dimensions length: 200 mm

Notes For mounting rails 80/40
for internal mounting 4 drilling screws required for mounting



Insert-connector item-number: 201.618.200-B

Dimensions length: 200 mm

Notes For mounting rails 85/50
for internal mounting 4 drilling screws required for mounting



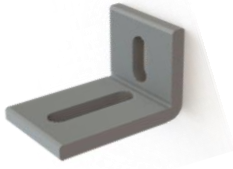
Insert-connector item-number: 201.019.400-B

Dimensions length: 400 mm

Notes For mounting rail PR200
for internal mounting, 2 connectors per connecting point needed

Product range

Profile system



Cross connection angle item number: 201.014.40-B

Dimensions 58 x 38mm, width: 40 mm

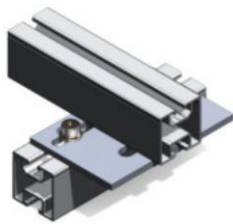
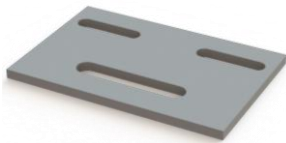
Notes For the construction of a rail cross bracing
3 x M8x16 screw and 3 x slot nut are required



Cross connection plate item number: 201.023.120-B

Dimensions length: 120 mm

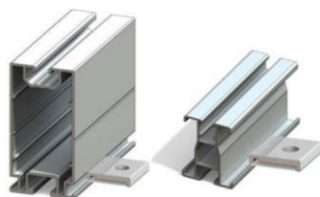
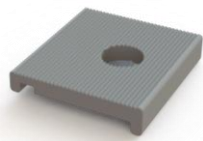
Notes For the construction of a rail cross bracing
The same rail with M10 bottom connection can be used for both profile layers.



Mounting plate item number: 201.026....-B

Dimensions length: 40 mm

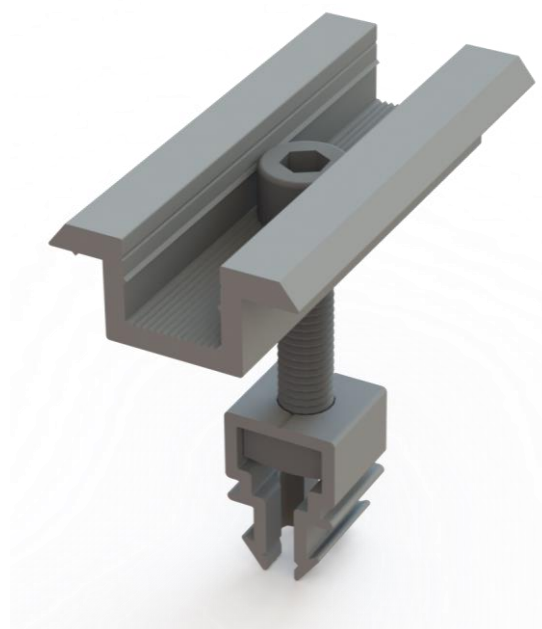
Notes For the construction of a rail cross bracing
Available with hole for M8 and hole for M10





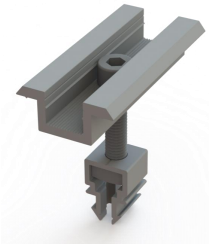
Product range

Module installation



Product range

Module installation

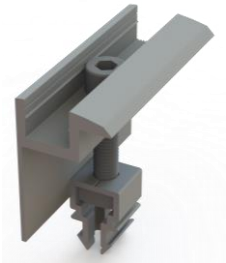


Middle clamp KlickFix item number: 201.9745-Mxx

Dimensions clamp: 70 mm length, 36 mm width
Space between modules: 20 mm

Notes Pre-assembled module clamp for simple and practical "click" installation

Please note the module frame height:
Version M1: Frame height 28 - 35 mm
Version M2: Frame height 36 - 44 mm
Version M3: Frame height 45 - 50 mm



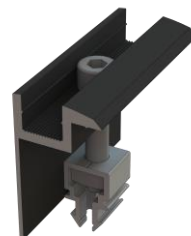
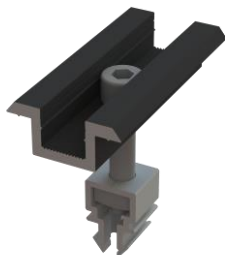
Endklemme KlickFix Artikelnummer: 201.9742-E..

Dimensions clamp: 70 mm length, 36 mm width
Space between modules: 20 mm

Notes Pre-assembled module clamp for simple and practical "click" installation

Please note the module frame height. There is an individual end clamp for each frame height.

Each also available with black anodized module clamp:



Product range

Module installation

Middle clamp TurnFix item number: 201.813-xx-B



Dimensions

clamp: 70 mm length, 36 mm width
Space between modules: 20 mm

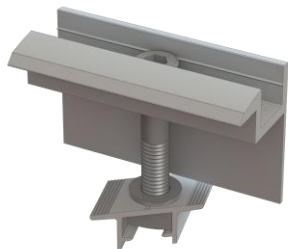
Notes

Pre-assembled module clamp for simple and practical "turn-in" installation

Please not the module frame height. There is an individual clamp for each frame height.



For use with the "short rails standard" on trapezoidal sheet metal roofs



End clamp TurnFix item number: 201.804-xx-B

Dimensions

Klemme: 70 mm Länge, 36 mm Breite
Modulabstand: 20 mm

Notes

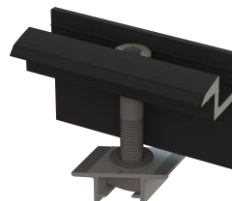
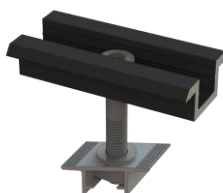
Pre-assembled module clamp for simple and practical "turn-in" installation

Please not the module frame height. There is an individual clamp for each frame height.



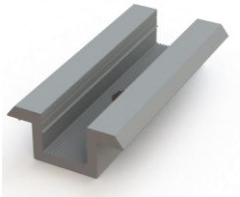
For use with the "short rails standard" on trapezoidal sheet metal roofs

Each also available with black anodized module clamp:



Product range

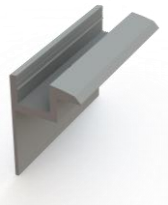
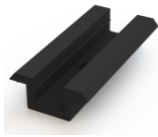
Module installation



Middle clamp item number: 201.013.70-B

Dimensions clamp: 70 mm length, 36 mm width
Space between modules: 20 mm

Notes Available in "mill finish" and "black anodized"

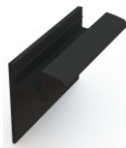


End clamp item number: 201.004.70x...-B

Dimensions clamp: 70 mm length, 36 mm width
Space between modules: 20 mm

Notes Available in "mill finish" and "black anodized"

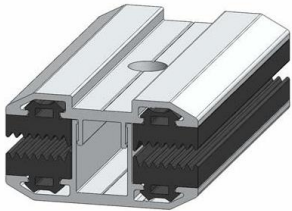
Please specify module frame height.



Module frame height	Screw length for slot nuts	Use of washer
32 mm	M8 x 35 mm	
34 mm	M8 x 35 mm	
35 mm	M8 x 40 mm	X
36 mm	M8 x 40 mm	X
38 mm	M8 x 40 mm	
40 mm	M8 x 45 mm	X
42 mm	M8 x 45 mm	
45 mm	M8 x 50 mm	X
46 mm	M8 x 50 mm	X
50 mm	M8 x 55 mm	X

Product range

Module installation

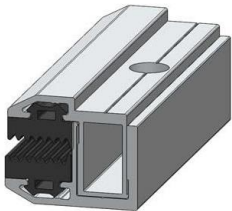


Middle clamp for glass modules item number: 201.9745-LAMINAT

Dimensions clamp: 80 mm length

Notes Two-piece, Inclusive EPDM
With approval for different module manufacturers, incl. First Solar

An additional screw M8x35 + lock washer is required



End clamp for glass modules item number: 201.9742-LAMINAT

Dimensions clamp: 80 mm length

Notes Two-piece, Inclusive EPDM
With approval for different module manufacturers, incl. First Solar

An additional screw M8x35 + lock washer is required

Product range

Mounting systems for flat roofs



Product range

Mounting systems for flat roofs



simplex roof

Dimensions Individual project designs

Notes Virtually ballast-free mounting system for flat roofs, module orientation to the south in the wind tunnel developed and aerodynamically optimized, suitable for roofs with low surface load reserve



simplex roof base

Dimensions Individual project designs

Notes Virtually ballast-free mounting system for flat roofs, module orientation to the south in the wind tunnel developed and aerodynamically optimized, suitable for roofs with low surface load reserve



duplex roof

Dimensions Individual project designs

Notes Virtually ballast-free mounting system for flat roofs, module orientation to east/west in the wind tunnel developed and aerodynamically optimized, suitable for roofs with low surface load reserve



duplex roof base

Dimensions Individual project designs

Notes Virtually ballast-free mounting system for flat roofs, module orientation to east/west in the wind tunnel developed and aerodynamically optimized, suitable for roofs with low surface load reserve

Further information on the flat roof systems can be found in the respective data sheets. Please send us your project enquiries for individual designs and offers

Product range

Mounting systems for flat roofs



Flat roof elevation item number 201.099.xxxxx

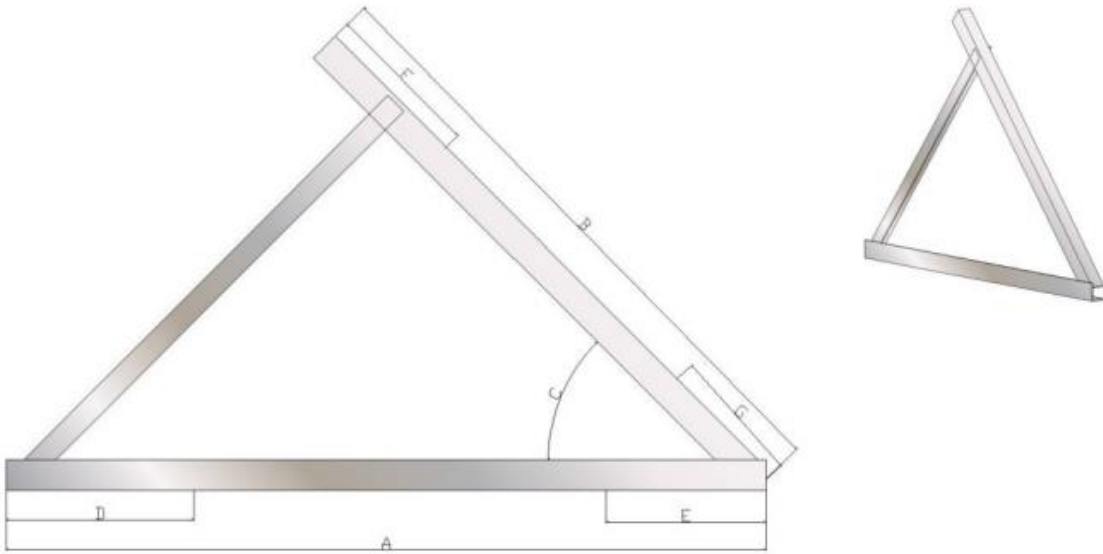
Dimensions Individual dimensions

Notes Elevation triangle made of aluminium angle profiles, e.g. 40x40x3 or 40x40x5, inclination angle selectable
Side lengths also individual

Please also note our corresponding inquiry sheet on the following page

Product range

Mounting systems for flat roofs



Please let us know your required special dimensions:

A	B	C	D	E	F	G

Required material (e.g. Alu angle 40x40x3):

Required quantity:

Shipping adress

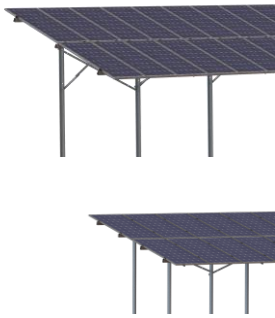
Product range

Mounting system for groundmounted PV



Product range

Mounting system for groundmounted PV



PROFI2 for 2 modules, orientation portrait

Dimensions Individual project designs

Notes Steel construction made of hot-dip galvanised steel with module support rails made of aluminium

Module tables are statically optimised and produced for individual projects

Available as single-leg and two-leg versions



PROFI3H for 3 modules, orientation portrait

Dimensions Individual project designs

Notes Steel construction made of hot-dip galvanised steel with module support rails made of aluminium

Module tables are statically optimised and produced for individual projects



PROFI3W for 3 modules, orientation landscape waagerecht

Dimensions Individual project designs

Notes Steel construction made of hot-dip galvanised steel with module support rails made of aluminium

Module tables are statically optimised and produced for individual projects

For further information on the groundmounted systems, please refer to the respective data sheets and send us your project enquiries for individual designs and offers.

Product range

Mounting system for groundmounted PV



PROFI4W for 4 modules, orientation landscape

Dimensions Individual project designs

Notes Steel construction made of hot-dip galvanised steel with module support rails made of aluminium

Module tables are statically optimised and produced for individual projects



PROFI6W for 6 modules, orientation landscape

Dimensions Individual project designs

Notes Steel construction made of hot-dip galvanised steel with module support rails made of aluminium

Module tables are statically optimised and produced for individual projects



duplex field

Dimensions Individual project designs

Notes Steel construction

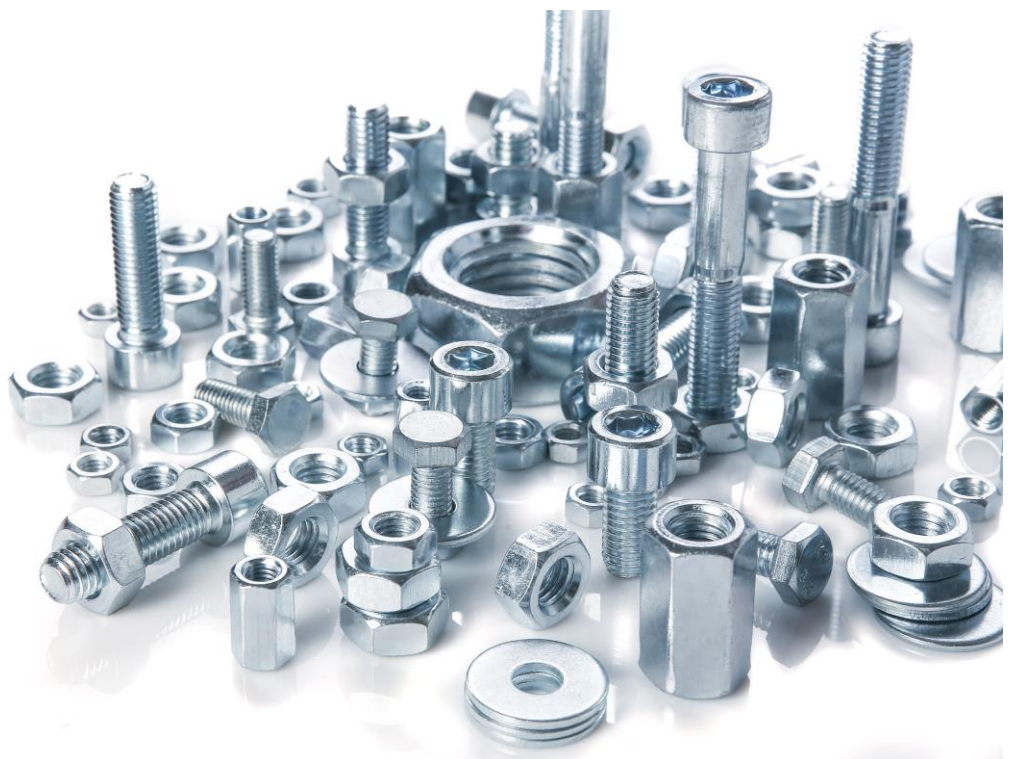
Special solution for terrain that does not allow pile driving - e.g. landfills, parking lots, sealed conversion areas or stone deserts.

Up to 150% more modules on the same area, as no shading distance is required

For further information on the groundmounted systems, please refer to the respective data sheets and send us your project enquiries for individual designs and offers.

Product range

Fasteners & accessories



Product range

Fasteners & accessories

In principle, we supply all stainless steel fasteners in the strength classes A1 to A5. In the following, we show only a selection of the articles that are used for our solar mounting systems. Please feel free to send us your requirements for articles not included in this catalogue.



Washer head screw item number: 301.9810.xxx

Dimensions e.g. 6x80, 6x100
8x80, 8x100, 8x120

Notes TX-drive, stainless steel hardened, approved by the construction supervision authority for fastening, e.g. For installation of roof-hooks



Hex-head wood screws item number: 301.571.xxx

Dimensions e.g. 8x80, 8x100, 8x120, 8x140, 8x160, ...
10x80, 10x100, 10x120, 10x140, 10x160, ...

Notes Stainless steel, according to DIN 571
e.g. For installation of roof-hooks



Wood screw item number: 301.9135.xxx

Dimensions e.g. 6x50, 6x100, ...

Notes Stainless steel, according to DIN 9135
TX-drive, countersunk head, part thread with ETA-approval



Allen screw item number: 301.912.xxx

Dimensions e.g. 8x16, 8x20, 8x25, 8x30, 8x35, ...

Notes Hexagon socket head cap screw, stainless steel A2, according to DIN 912
e.g. for mounting the module clamps in the slot nut



Hex-head screw item number: 301.933.xxx

Dimensions e.g. 10x25, 10x30, 10x40, ...

Notes Hex-head screw with thread up to head, stainless steel A2, according to DIN 933
e.g. for fastening the mounting rails to the roof hooks

Product range

Fasteners & accessories



Hammerhead screw item number: 301.9664-2-10x30-3

Dimensions 10 x 30

Notes Stainless steel A2
e.g. for a more comfortable fastening of the mounting rails on the roof hooks



Hammerhead screw Type 28/15 item number: 301.9415.xxx

Dimensions e.g. 8x20, 8x25, 8x30, 8x35, ...
10x20, 10x25, 10x30, 10x40

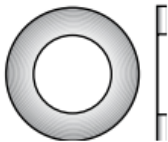
Notes Stainless steel A2
For mounting rails Type 28/15



washer item number: 301.9021.xxx

Dimensions e.g. for M8, for M10, for M12, ...

Notes With large external diameter, according to DIN 9021
stainless steel A2



Washer item number: 301.125.xxx

Dimensions e.g. for M8, for M10, for M12, ...

Notes Stainless steel A2, according to DIN 125



Locking washer item number: 301.9250.xxx

Dimensions e.g. for M8, for M10, for M12, ...

Notes Stainless steel A2, according to DIN 125
e.g. use with module clamps

Product range

Fasteners & accessories

Hex-head self-drilling screw item number: 301.7504-2-5,5x25K



Dimensions 5,5 x 25mm

Notes Stainless steel A2, according to DIN 7504
hex-head

e.g. for securing profile connectors in the mounting rails

Facade screw item number: 301.9191-2-6,3x25



Dimensions 6,3 x 25mm

Notes Bimetal (A2 / hardened steel)
Specially coated, with captive sealing washer, reduced drill tip, key-wide 8
with construction approval

e.g. for fastening aluminium profiles to trapezoidal sheet metal

Thin metal screw item number: 301.9191-2-...



Dimensions e.g. 4,5x25, 6,0x25, ...

Notes Bimetal (A2 / Nickel Strike, zinc plated, blue passivated)
Specially coated, with captive sealing washer, slide coated, key-wide 8
with construction approval

e.g. for fastening aluminium profiles to trapezoidal sheet metal

Product range

Fasteners & accessories



Mushroomhead screw item-number: 301.603.xxx

Dimensions e.g. 10x20, 10x25, 10x30, usw

Notes Stainless steel A2, according to DIN 603



Square nut item number: 301.557.xxx

Dimensions e.g. for M8, for M10, for M12

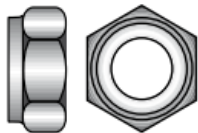
Notes Stainless steel A2, according to DIN 557



Hex-head nut item number: 301.934.xxx

Dimensions e.g. for M8, for M10, for M12

Notes Stainless steel A2, according to DIN 934



Stop nut item number: 301.985.xxx

Dimensions e.g. for M8, for M10, for M12

Notes Stainless steel A2, according to DIN 985



Hex-head nut with flange item number: 301.9345.xxx

Dimensions e.g. for M8, for M10, for M12

Notes Hex-head nut similar to DIN 6923 with flange and serration
Stainless steel A2

Product range

Fasteners & accessories



Slot nut item number: 301.001.1-E

Dimensions for M8

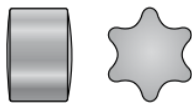
Notes Aluminium, with ball and spring in stainless steel
Swivels into the upper M8 tracks of the mounting rails



VA compound anchor item number: 301.9360.xxx

Dimensions Various

Notes VA compound anchor mortar cartridge VA-P
e.g. for fastening dowel screws in concrete



Star inserts for TX-drive item number: 301.9495.xxx

Dimensions For TX-sizes 10 – 40

Notes Zinc diecast



Ball for driving in item number: 301.9490-2-6,25

Dimensions for M8, key-wide 6

Notes For Securing allen screws
Balls Niro 304 6,25 mm Grade 40



Many thanks for your interest!

Please do not hesitate to contact us if you have any suggestions, questions or ideas for improvement. You can find all contact details under:

<http://www.profinal-aluminium.de>

