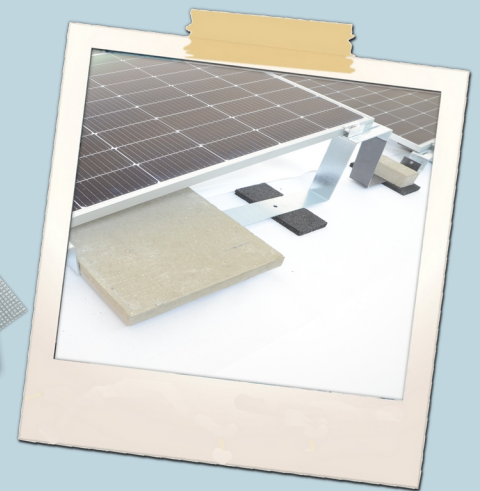
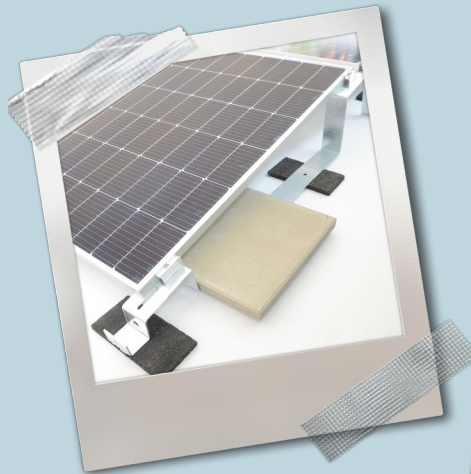




Only ONE console. Only ONE work tool. Here comes ONE FLAT.

ONE FLAT is a PV mounting system that provides you the fastest and simplest mounting experience on flat roof ever.



ONE FLAT is guarantee for the best mounting experience on flat roofs.

ONE single console

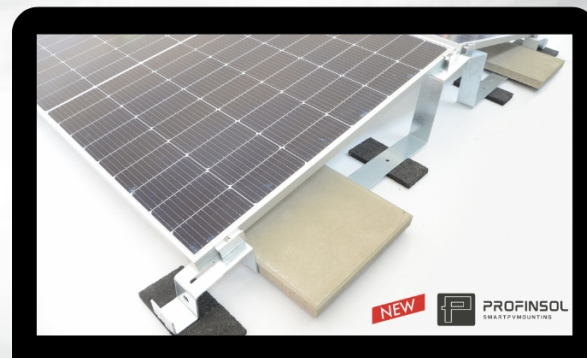
With the patented ONE concept only ONE single main component is needed for the installation.

ONE work tool

Only ONE single work tool is needed for the installation of the system including clamping.

Short and long side clamping

The ONE FLAT system allows both short side and long side clamping, depending on panel size or loads.



Contiguous system

The consoles are connected into a contiguous structure which guarantees highest stability.

Quick installation

Simple and fast installation:
15 kWp / hour / person.

Simply stockable

Due to the optimal packaging the system is effectively stockable in any warehouse.

TÜV certified

The ONE FLAT system is certified for loads according to IEC 61215-2:2021.

ONE FLAT +

The smart mounting structure with East / West layout



Technical information

Inclination	10°
Module width	980 mm - 1.250 mm
Application	on flat roofs up to a gentle incline of 5°
Roof orientation	East / West facing
Roof covering	bitumen, foil, gravel, green
Clamping	on the short or long side
Fixation to roof	without roof penetration, with ballast blocks
Building protection	underlay mats for critical roof surfaces
Static	TÜV certified according to EN IEC 61215-2:2021
Lightening protection	connection for lightening protection is possible
Material	steel S355, hot dip galvanised (DIN 55928-8)
Connection material	A2 stainless steel screws and nuts
Assembly time	more than 15 kwp / person / hour
Warranty	10 years

Benefits

East/West layout

10° angle guarantees an optimised yield for your project. For flat roofs with a gentle inclination of max 5°.

ONE concept

Only one main component and a single tool is needed for installation.

Quick and easy

The average installation speed is above 15 kWp / hour / person.

Optimised storage

Low storage and delivery costs: 1 pallet means structure for appr. 100 panels.

Resistant

Resistant to UV, wind and corrosion.

10 years warranty

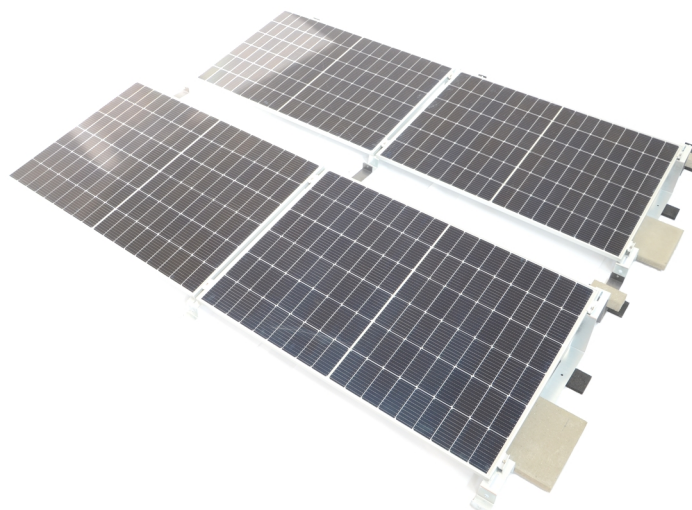
We provide a market conform warranty of 10 years.



PROFIN SOL
SMART PV MOUNTING

ONE FLAT S

The smart mounting structure with South facing layout



Technical information

Inclination	10°
Module width	980 mm - 1.250 mm
Application	on flat roofs up to a gentle incline of 5°
Roof orientation	South facing
Roof covering	bitumen, foil, gravel, green
Clamping	on the short or long side
Fixation to roof	without roof penetration, with ballast blocks
Building protection	underlay mats for critical roof surfaces
Static	TÜV certified according to EN IEC 61215-2:2021
Lightening protection	connection for lightening protection is possible
Material	steel S355, hot dip galvanized (DIN 55928-8)
Connection material	A2 stainless steel screws and nuts
Assembly time	more than 10 kwp / person / hour
Warranty	10 years

Benefits

South facing layout

10° angle guarantees an optimised yield for your project. For flat roofs with a gentle inclination of max 5°.

ONE concept

Only one main component, an additional connector, and a single tool is needed for installation.

Quick and easy

The average installation speed is above 10 kWp / hour / person.

Optimised storage

Low storage and delivery costs: 1 pallet means structure for appr. 100 panels.

Resistant

Resistant to UV, wind and corrosion.

10 years warranty

We provide a market conform warranty of 10 years.



PROFINSOL
SMARTPV MOUNTING



PV installation on flat roof has never been easier.

Contact us:

PROFinSOL Ltd.
info@profinsol-systems.com
www.profinsol-systems.com



PROFINSOL
SMARTPV MOUNTING

About us

Our team develops, manufactures, and distributes smart PV mounting solutions for flat roofs. Flat roof surfaces are the greatest and most eco-friendly areas where PV systems should be installed to decarbonize the world. This vision is a driver for us when working on our smart mounting solutions.

Our business story began with the recognition, that after already being active several years in the PV industry we could not imagine that solar module installation on flat roof can not be faster and more simple.

This idea had been finally realised in form of an innovative console system for mounting solar panels that requires only one single main component and one tool for the whole installation process.

Our aerodynamically optimized PV mounting solutions are tested for safety and mechanical stability.

We deliver values. We keep our promise.

Quality

Our system components are all made according to the highest European industry standards. ONE FLAT is also certified for loads according to IEC 61215-2:2021

Trust

We know what really matters when it comes to install on flat roof. With our expertise we support you on our long-term journey together. We work precise and transparent.

Speed

We are a young international dynamic team. We promise you a reply to your inquiry in maximum 24 hours. Thanks to our experience we've built valuable partnerships with suppliers around the world. We guarantee a rapid availability and shipment across Europe.

Friendliness

Our in-house experts will review all the information you submit in order to create a plan that works with your schedule and needs. This we promise with the highest enthusiasm and friendly communication.